

# aluminum

## products

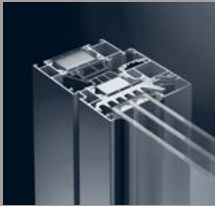
### Schüco AWS 90.SI+ | 31

PH Performance Triple-Pane Window



### Schüco AWS 75.SI | 32

High Performance Triple-Pane Window



### Schüco AWS 70.HI | 33

Best Value Double and Triple-Pane Windows



### Schüco AWS 65 | 34

High Performance Double-Pane Window



### Schüco ADS Doors | 35

Entry, Patio, Lift-Slide & Tilt-Slide Doors

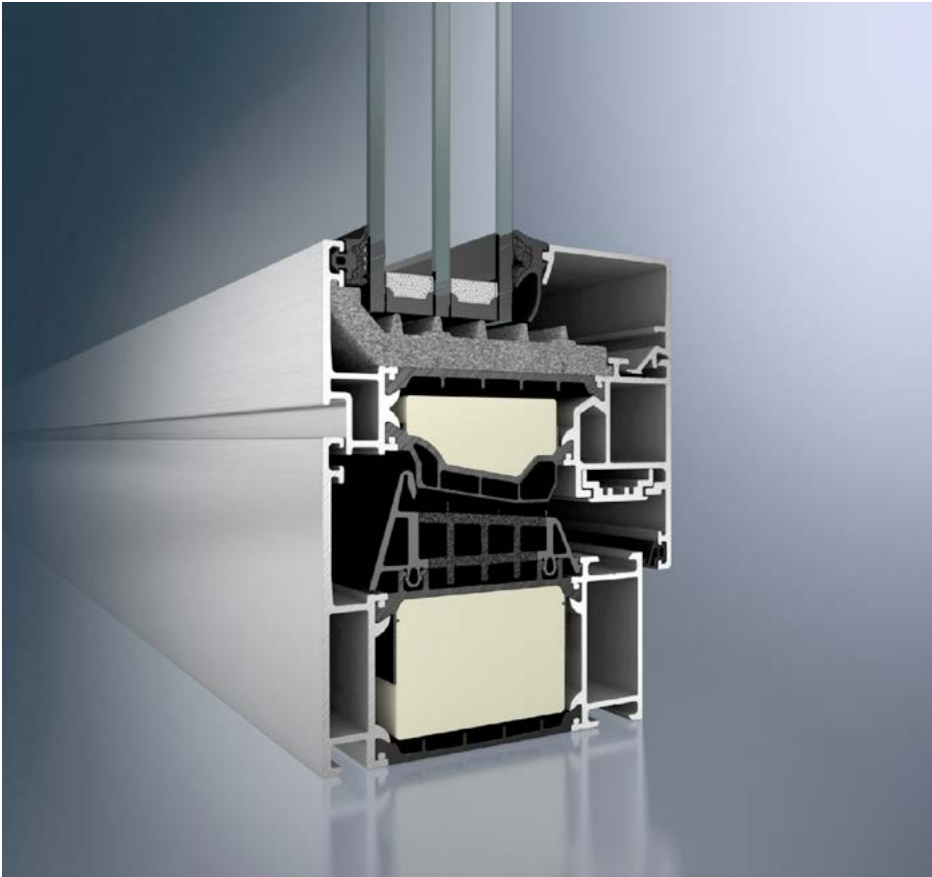


EUROPEAN  
ARCHITECTURAL  
SUPPLY

FINE WINDOWS FOR ALL SEASONS

# Schüco Window AWS 90.SI+

## Passive House Standard for Aluminum Window



Schüco AWS 90.SI+

**The Schüco AWS 90.SI+ aluminum window combines the benefits of aluminum with pioneering thermal insulation for sustainable architecture.**

The Schüco AWS 90.SI+ window meets the demand for maximum thermal insulation previously restricted to uPVC and timber windows.

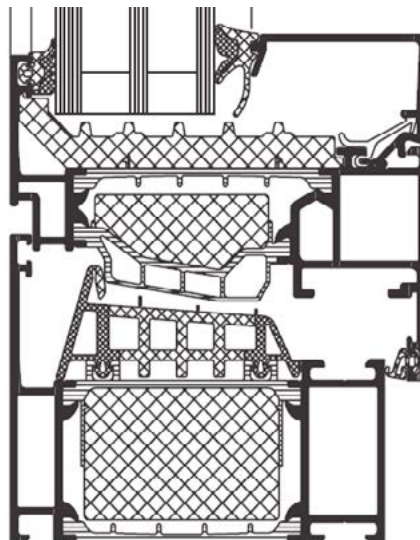
Combined with the concealed Schüco AvanTec hardware, sashes up to 350 lbs can be installed.

#### Features and Benefits

- Profile depth of 90 mm
- The maximum thermal insulation  $U_f$  value of  $0.9 - 1.0 \text{ W}/(\text{m}^2\cdot\text{K})$
- Co-extruded center gasket with fins
- Optimized insulation zone with foam-filled insulating bars
- Available in a design with tilt-slide hardware
- Compatible with the Schüco ADS 90.SI door system



Isothermal flow in AWS 90.SI+

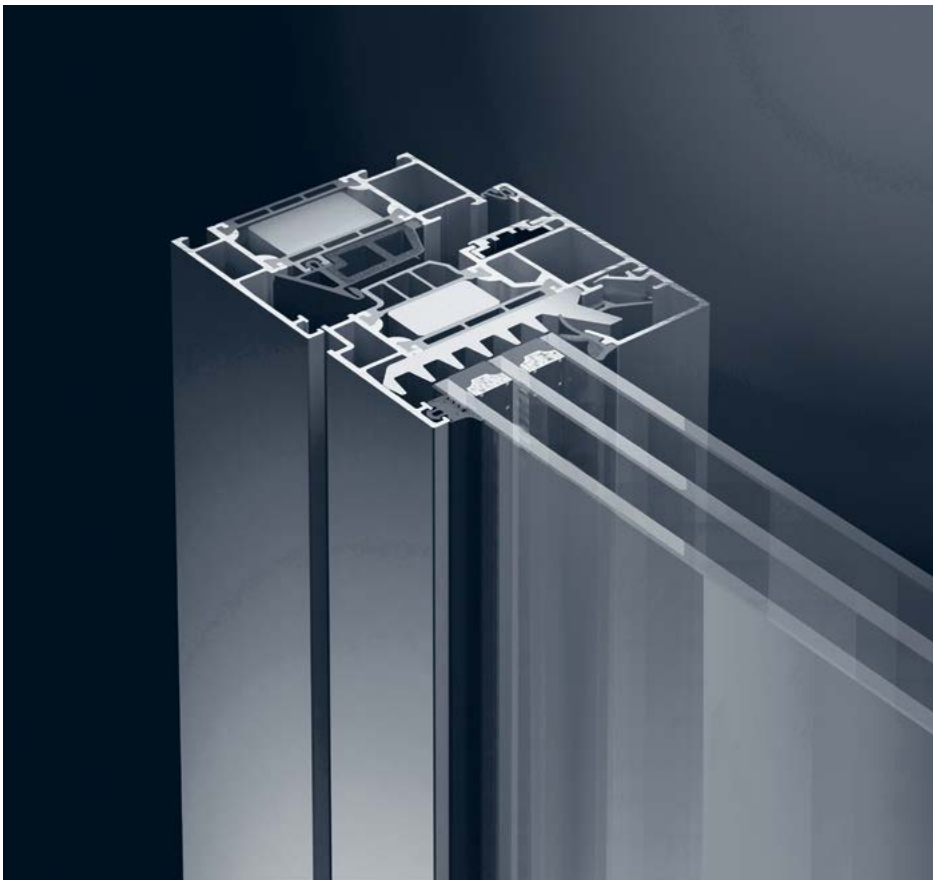


Section detail of AWS 90.SI+

Parameters	
Frame depth	90 mm 3.54 in
Frame face width	117 mm 4.61 in
Thermal insulation $U_f$	$1.0 \text{ W}/(\text{m}^2\cdot\text{K})$ $0.18 \text{ Btu}/(\text{hr}\cdot\text{ft}^2\cdot^\circ\text{F})$
Sound insulation $R_{w,p}$	48 dB

# Schüco Window AWS 75.SI

## High Performance Triple-Pane Aluminum Window



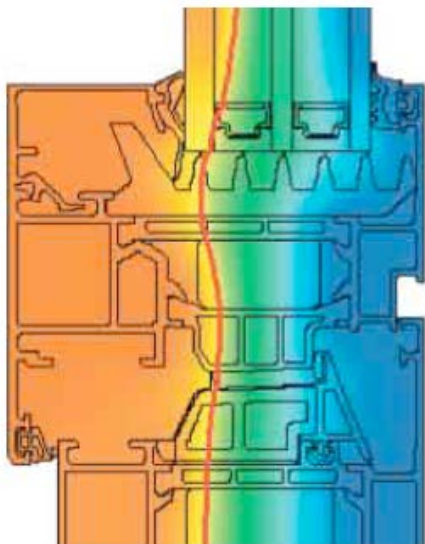
Schüco AWS 75.SI

**The Schüco AWS 75.SI aluminum window system combines the excellent thermal insulation properties of uPVC and timber windows with the unique advantages of aluminum: durability and stability, narrow face widths and a variety of designs - in large, transparent formats.**

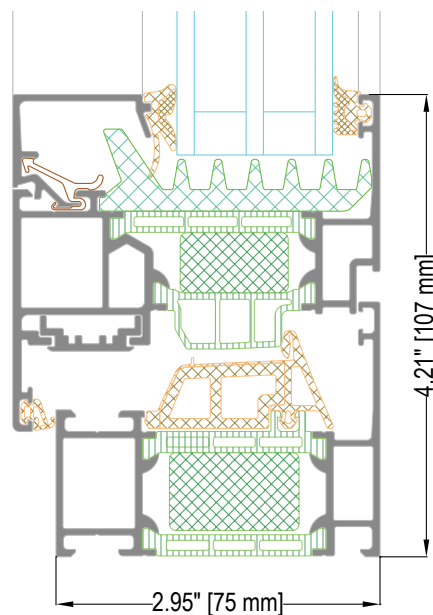
With a basic depth of just 75 mm, this window system offers excellent versatility and can easily be combined with the Schüco ADS door system.

### Features and Benefits

- Outstanding thermal insulation for basic depth of 75 mm:  $U_f$  values from 0.9 to 1.6  $W/(m^2 \cdot K)$
- Enlarged insulation zone with foam-filled insulating bars
- Optimized, co-extruded center gasket
- Innovative design of thermal insulation in glazing groove
- Wide range of profiles including the Schüco AWS 75 RL.SI design system
- Compatible with the Schüco ADS door series



Isothermal flow in AWS 75.SI



Section detail of AWS 75.SI

Parameters	
Frame depth	75 mm 2.95 in
Frame face width	117 mm 4.61 in
Thermal insulation $U_f$	1.3 $W/(m^2 \cdot K)$ 0.22 $Btu/(hr \cdot ft^2 \cdot ^\circ F)$
Sound insulation $R_{w,p}$	48 dB

# Schüco Window AWS 70.HI

## Best Value Double and Triple-Pane Windows



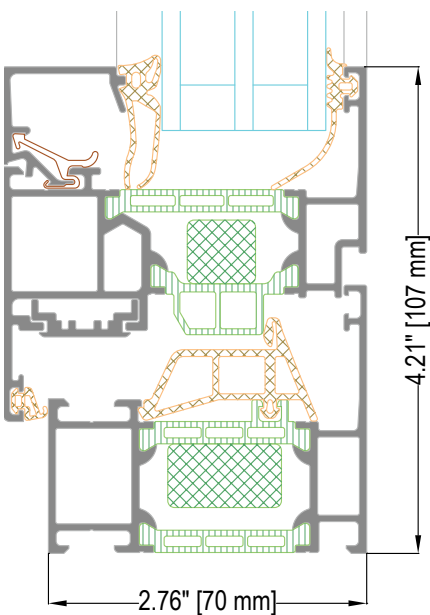
Schüco AWS 70.HI

**The Schüco AWS window systems with a basic depth of 70mm combine excellent thermal insulation with the unique advantages of aluminum: durability and stability, narrow face widths and a variety of designs.**

In addition to the outward-opening solutions for easy-access window doors from the Schüco AWS 70.HI standard window series, there is a comprehensive range of options available with this basic depth, even for special design requirements.

#### Features and Benefits

- Excellent thermal insulation with a basic depth of 70 mm:  $U_f$  values of 1.6 W/(m<sup>2</sup>.K) (face width 117 mm)
- Also available as outward-opening vent or as crank-operated, tilt-turn option for large, heavy units
- Compatible with the Schüco ADS door series

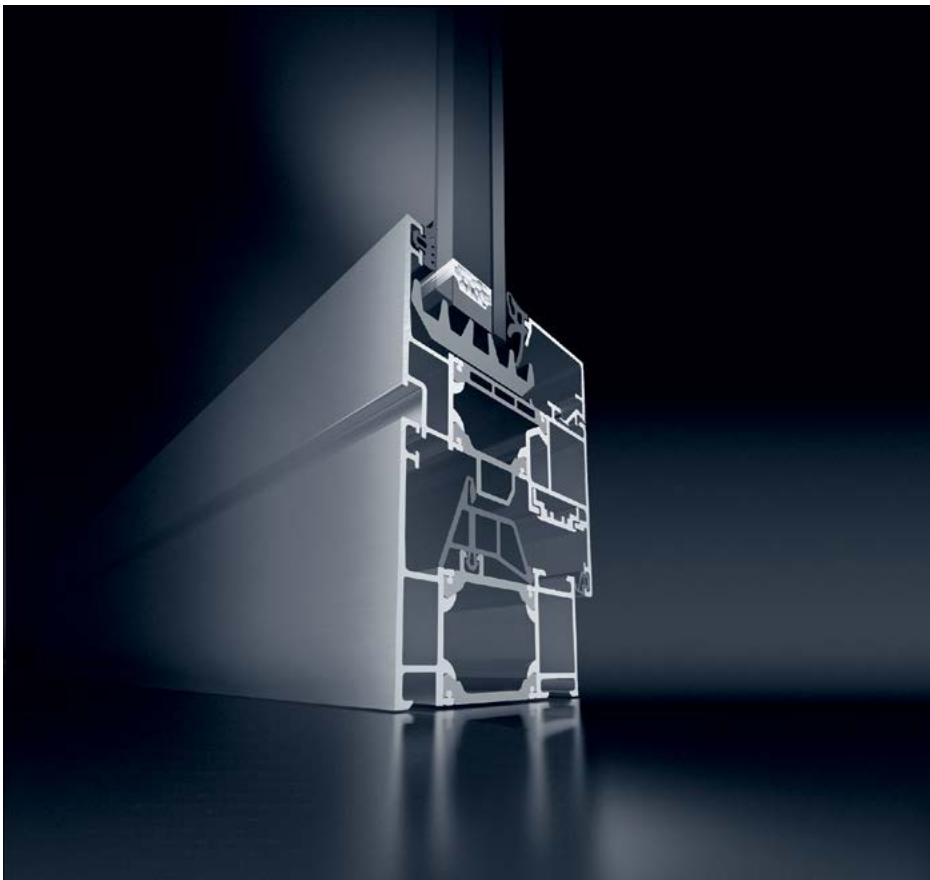


Section detail of AWS 70.HI

Parameters	
Frame depth	70 mm 2.76 in
Frame face width	117 mm 4.61 in
Thermal insulation $U_f$	1.6 W/(m <sup>2</sup> .K) 0.27 Btu/(hr.ft <sup>2</sup> .°F)
Sound insulation $R_{w,p}$	48 dB

# Schüco Window AWS 65

## Affordable Double-Pane Performance



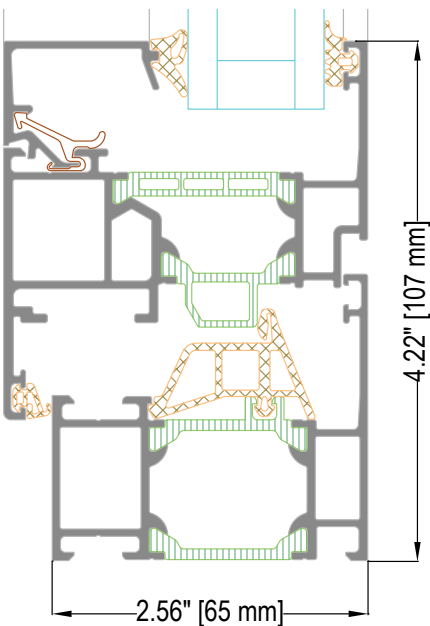
Schüco AWS 65

**Schüco offers a high-performance, modern system with the Schüco AWS 65 window series. This system meets requirements for energy efficiency with a comprehensive range of profiles and carefully considered construction details.**

Tailor-made solutions for inward and outward-opening windows are possible with the comprehensive Schüco AWS 65 standard window series.

#### Features and Benefits

- Improved thermal insulation with a basic depth of 65 mm:  $U_f$  values of  $2.2 \text{ W}/(\text{m}^2\cdot\text{K})$  (face width 117 mm)
- Available as flush-fitted or outward-opening vent
- Available as a block system (BS) and window façade (WF), including an outward-opening solution
- Compatible with the Schüco ADS door series



Section detail of AWS 65

Parameters	
Frame depth	65 mm 2.56 in
Frame face width	117 mm 4.61 in
Thermal insulation $U_f$	$2.2 \text{ W}/(\text{m}^2\cdot\text{K})$ $0.38 \text{ Btu}/(\text{hr}\cdot\text{ft}^2\cdot^\circ\text{F})$
Sound insulation $R_{w,p}$	47 dB

# Schüco Aluminum Doors

## Entry, Patio and Sliding Door Systems



### Schüco ADS Entry and Patio Doors

The Schüco ADS 70, 75 and 90 entry and patio door systems offer high quality solutions for both residential and commercial applications. They combine exceptional water-tightness, excellent sound reduction and burglar-resistance with extremely easy operation.

The doors are available in both single and double-sash French door configurations. The patio door sash and frame profiles utilize multi-point hardware architecture compatible with the Schüco AWS window systems, providing designers with consistent sightlines between windows and doors.



### Schüco ASS 70.HI Lift-Slide Doors

ASS 70.HI is the top performing aluminum lift-sliding system in the world. Capable of holding ultra large sashes, the profile can be used to create openings in excess of 50 ft.

The lift-slide rollers enable easy operation of doors weighing hundreds of pounds. The up and down motion of the sash enables the door to sit tight on its dual gaskets, keeping water and drafts at bay.

The door utilizes a profile with a wide thermal break, providing for exceptional energy performance.



### Schüco Tilt-Slide Doors

Tilt-slide doors combine the benefits of slide and tilt-turn functions: the door units “float” on ball-bearing rollers and are extremely easy to open and close. Unlike standard lift-slide doors, they also can be tilted.

Schüco tilt-slide aluminum doors are the most air-tight sliding doors on the market, suitable for Passive House applications. In addition, they offer the highest levels of noise reduction because of their excellent sealing qualities.

#### Features and Benefits

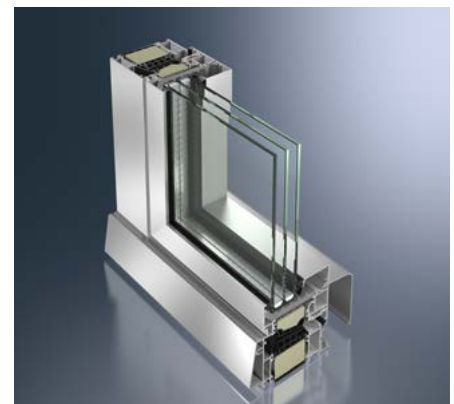
- Compatible with profiles up to Schüco AWS 90.SI+ (90 mm depth)
- Up to 250 kg vent weight
- Large vents up to 2,200 mm x 2,800 mm possible
- Excellent weather-tightness



Schüco ADS 90.SI+ Entry Door



Schüco ASS 70.HI



Schüco AWS 90.SI+ Tilt-Slide Door

# Schüco ADS HD Commercial Doors

## Heavy Duty Door Systems



### Schüco ADS HD Commercial Doors

The Schüco ADS HD (Heavy Duty) door system is built to meet the requirements of large commercial projects and is optimized for continuous and maximum structural loading.

The ADS 90 system is capable of holding triple-pane glass up to R-14, enabling the doors to achieve an overall  $U_g=0.17$  Btu/(hr.ft<sup>2</sup>.F°). This makes ADS 90 a unique option for designers seeking Passive House or Net-Zero performance.

The Schüco ADS HD (Heavy Duty) door system is ideal for entrance areas subject to heavy use. Fitted with barrel hinges, the system is tested to 1 million cycles and therefore meets the highest durability requirements.

The ADS door system is available with ADA-compliant thresholds, panic bar hardware, coordinated door closers, electronic multi-point locks, and handicap-accessible openers, making it the most versatile commercial door on the market.



Schüco Fingerprint Access System



Schüco Panic Hardware



Schüco Heavy-Duty Hardware

EUROPEAN  
ARCHITECTURAL  
SUPPLY

North American Distributor  
of Fine European Windows  
M A K R O W I N

SCHÜCO

144 North Road Suite 2500 |

Sudbury, MA 01776

2013 Copyright © European Architectural Supply, LLC. All Rights Reserved.  
Schüco is a registered trademark of Schüco International KG.  
Makrovin is a registered trademark of Makrovin s.r.o.  
Photos: Schüco International KG  
Photos: Greg Pierru Photography  
Design: Chin Communications



**fine windows**  
**for all seasons**

**[www.finewindows.com](http://www.finewindows.com)**

EUROPEAN ARCHITECTURAL SUPPLY | SUPERVISED DELIVERY | INSTALLATION | TRAINING | SERVICE